



EWCO

HOT WORKS FABRICS, CURTAINS & BLANKETS

“SPARKS, SPATTER & SLAG”

APPLICATIONS

- **Welding**
- **Metal Cutting**
- **Grinding**
- **Stress Relief**
- **Radiant Heat Protection**
- **Chemical Splash Protection**

FABRICS FOR HOT WORKS SAFETY

EWCO

Specialty Products, Inc.

Research / Testing / Manufacturing / Inventory



Lewco Specialty Products is the premier fabric manufacturing, testing and training facility for "Hot Works Fabrics." We test our "Hot Works Fabrics" to standards set by Factory Mutual (FM), NFPA 701-, ASTM and many other industry standards. Lewco stocks large fabric inventories for immediate shipment.



Products



Fabricated



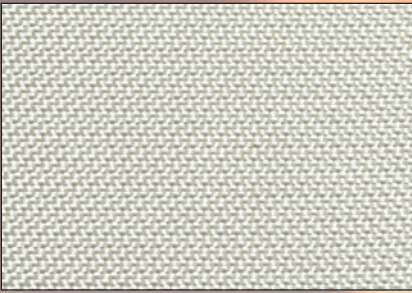
Roll Goods

The High Temperature Answer

| Style Curtain | KN 430 | KN 430 HT | 1532 AB | 1600 NS | 2025-HI | 2025 H-2C | 1700 SAR-2 | 1750 SAR-2 | 2100 Z | 2400 F-0 | 2400 NB | 3000 SAR-2 | 1800 HT-0 | 3600 HT-0 | 3500 Z | 6000 Z | 3600 NB | Felt |
|-------------------------------|--------|-----------|---------|---------|---------|-----------|------------|------------|--------|----------|---------|------------|-----------|-----------|--------|--------|---------|------|
| Vertical Curtain Sparks | G | G | VG | VG | G | VG | VG | VG | VG | VG | VG | VG | VG | VG | VG | VG | VG | VG |
| Vertical Curtain Spatter/Slag | F-P | F-P | G | VG | F | G | VG | VG | VG | G | VG | VG | VG | VG | VG | VG | VG | VG |
| Diagonal Drape Spatter | F | F | F-G | G | F | F-P | G-VG | G-VG | G | G | G-VG | VG | VG | VG | G | VG | VG | VG |
| Horizontal Heavy Spatter | P | P | P | P | F | F | P | P | F | F | G | VG | VG | VG | G | VG | VG | VG |
| Horizontal Heavy Slag | P | P | P | P | P | P | P | P | P | P | F | F | G | VG | F | G | F-G | VG |

V = Light to No Scorching, No Burn Thru
 G = Moderate Scorching, No Burn Thru
 F = Heavy Scorching, Partial Burn Thru
 P = Heavy Scorching, Total Burn Thru

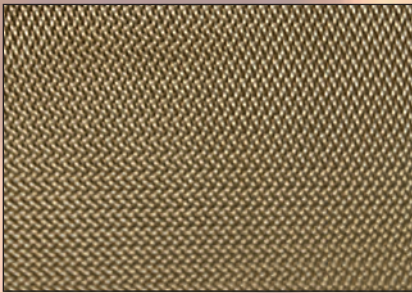
Light Duty Welding Blankets



LEWCO Style KN430 is a woven, non-flammable, asbestos-free fiberglass fabric suitable for lagging and as curtains for spark protection in welding and cutting operations. This fabric has been tested and meets NFPA 701-1999 Fire Tests for Flame-Resistant Textiles and Films Method 1. This material should not be used to catch and hold molten slag.

Typical Properties

| | |
|--------------------|--------------------------|
| Color | Off White |
| Weight | 12.5 Oz./yd ² |
| Thickness | 0.0130 in |
| Width | 40", 60" |
| Weave | 4-Harness Satin |
| Roll Length | 50 yd |
| Fabrics Melt Point | 1523°F |



LEWCO Style KN430 HT is a woven, nonflammable, asbestos-free fiberglass fabric suitable for lagging and as curtains for spark protection in welding and cutting operations. This fabric has been tested and meets NFPA 701-1999 Fire Tests for Flame-Resistant Textiles and Films Method 1. This material should not be used to catch and hold molten slag.

Typical Properties

| | |
|--------------------|--------------------------|
| Color | Tan |
| Weight | 12.5 Oz./yd ² |
| Thickness | 0.0130 in |
| Width | 40", 60" |
| Weave | 4-Harness Satin |
| Roll Length | 50 yd |
| Fabrics Melt Point | 1523°F |



LEWCO Style 1532 AB is a lightweight, woven, asbestos-free fiberglass fabric suitable for light sparks or spatters when used in welding, metal cutting and grinding operations. This fabric has been tested and meets NFPA 701-1999 Fire Tests for Flame-Resistant Textiles and Films Method 1. This material should not be used to catch and hold molten slag.

Typical Properties

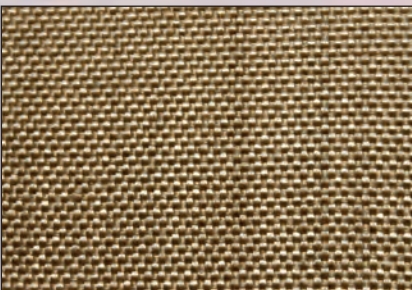
| | |
|-----------------------|------------------------|
| Color | Black |
| Weight | 14 Oz./yd ² |
| Thickness | 0.0145 in |
| Width | 60" |
| Weave | 4-Harness Satin |
| Roll Length | 50 yd |
| Fabric Melt Point | 1523°F |
| Coating Decomposition | 350°F |



LEWCO STYLE 1600 N is an asbestos-free woven fiberglass fabric coated on both sides with neoprene elastomers. The fabric was developed for welding curtains, blankets and screens to provide protection from molten metal splash. Standard stock colors are Black and Salmon – other colors available upon request. This material should not be used to catch and hold molten slag.

Typical Properties

| | |
|-----------------------|------------------------|
| Color | Various |
| Weight | 16 Oz./yd ² |
| Thickness | 0.016 in |
| Width | 60" |
| Weave | 4-Harness Satin |
| Roll Length | 50 yd |
| Fabric Melt Point | 1523°F |
| Coating Decomposition | 350°F |



LEWCO Style 2025 H-I is an asbestos-free woven fiberglass fabric, heat treated to set the weave and eliminate organic binders. This fabric has been tested and meets NFPA 701-1999 Fire Tests for Flame-Resistant Textiles and Films Method 1. This material should not be used to catch and hold molten slag.

Typical Properties

| | |
|-------------------|--------------------------------|
| Color | Gold |
| Weight | 18 Oz./yd ² +/- 10% |
| Thickness | 0.032 in |
| Weave | Plain |
| Width | 40", 60" |
| Roll Length | 50 yd |
| Fabric Melt Point | 1523°F |

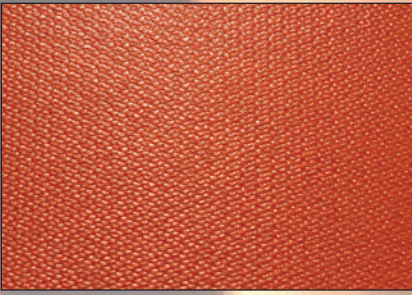


LEWCO Style 2025 H-2C is a medium weight, inexpensive, woven, nonflammable, asbestos-free fiberglass fabric suitable for light sparks or spatters when used in welding, cutting and grinding operations. This fabric has been tested and meets NFPA 701-1999 Fire Tests for Flame-Resistant Textiles and Films Method 1. This material should not be used to catch and hold molten slag.

Typical Properties

| | |
|-------------------|--------------------------------|
| Color | Gold |
| Weight | 17 Oz./yd ² +/- 10% |
| Thickness | 0.30 in |
| Width | 40", 60" |
| Weave | Plain |
| Roll Length | 50 yd |
| Fabric Melt Point | 1523°F |

Medium Duty Welding Curtains / Blankets



LEWCO Style 1700 SAR-2 is an asbestos-free, woven fiberglass fabric impregnated with a special chemical, water and oil-resistant silicone rubber. LEWCO Style 1700 SAR-2 is a flexible, light-to-medium weight fabric for welding curtains and fire blanket applications. This material should not be used to catch and hold molten slag.

Typical Properties

| | |
|-----------------------|--------------------------|
| Color | Iron Oxide (Red) |
| Weight | 17.0 Oz./yd ² |
| Thickness | 0.017 in |
| Width | 60" |
| Weave | 4 Harness Satin |
| Roll Length | 50 yd |
| Fabric Melt Point | 1523°F |
| Coating Decomposition | 500°F |



LEWCO Style 1750 SAR-2 is an asbestos-free, woven fiberglass fabrics impregnated with a special chemical, water and oil-resistant silicone rubber. This fabric has been tested and meets NFPA 701-1999 Fire Tests for Flame-Resistant Textiles and Films Method 1. This material should not be used to catch and hold molten slag.

Typical Properties

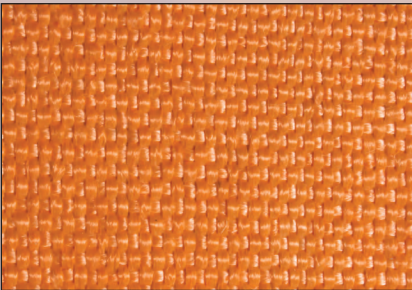
| | |
|-----------------------|--------------------------|
| Color | Iron Oxide (Red) |
| Weight | 17.5 Oz./yd ² |
| Thickness | 0.0175 in |
| Width | 60" |
| Weave | 4 Harness Satin |
| Roll Length | 50 yd |
| Fabric Melt Point | 1523°F |
| Coating Decomposition | 500°F |



LEWCO Style 3000 SAR-2 is an asbestos-free woven fiberglass fabric impregnated with a special chemical, water and oil-resistant silicone rubber. This fabric has been tested and meets NFPA 701-1999 Fire Tests for Flame-Resistant Textiles and Films Method 1. This material should not be used to catch and hold molten slag.

Typical Properties

| | |
|-----------------------|------------------------|
| Color | Red/Aluminized Pigment |
| Weight | 34 Oz./yd ² |
| Thickness | 0.032 in |
| Width | 60" |
| Weave | 8 Harness Satin |
| Roll Length | 50 yd |
| Melting Point | 1523°F |
| Coating Decomposition | 500°F |



LEWCO 2400 F-O is an asbestos-free fiberglass fabric and has been designed as a medium weight fabric for shielding against sparks, spatter and slight slag. This fabric has been tested and meets NFPA 701-1999 Fire Tests for Flame-Resistant Textiles and Films Method 1. This material should not be used to catch and hold molten slag.

Typical Properties

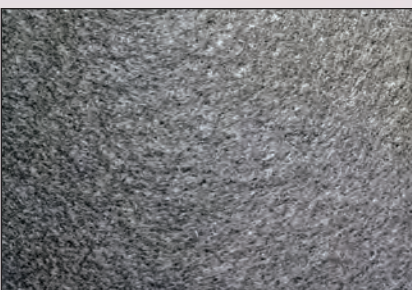
| | |
|-----------------------|------------------------|
| Color | Orange |
| Weight | 24 Oz./yd ² |
| Thickness | 0.065 in |
| Width | 40", 60" |
| Weave | Plain |
| Roll Length | 50 yd |
| Fabric Melt Point | 1523 °F |
| Coating Decomposition | 300°F |



LEWCO Style 2400 N is an asbestos-free woven fiberglass fabric coated on both sides with neoprene elastomers. Lewco 2400 N has been tested and meets NFPA 701-1999 Fire Tests for Flame Resistant Textiles and Films Method 2. This material should not be used to catch and hold molten slag.

Typical Properties

| | |
|-----------------------|------------------------|
| Color | Black |
| Weight | 24 Oz./yd ² |
| Thickness | 0.045 in |
| Width | 60" |
| Weave | Plain |
| Roll Length | 50 yd |
| Fabric Melt Point | 1523°F |
| Coating Decomposition | 350°F |



LEWCO carbonized black blanket felt is asbestos-free and has been specifically manufactured to provide a higher temperature resistance in certain applications. This fabric works very well in welding blanket applications. Contact LEWCO with your application.

Typical Properties

| | |
|-------------------|------------------------|
| Color | Black |
| Weight | 60 Oz./yd ² |
| Thickness | 0.104 in |
| Width | 60" |
| Weave | Felted |
| Roll Length | 50 yd |
| Fabric Melt Point | Above 2000°F |

Heavy Duty Welding Blankets / Pads



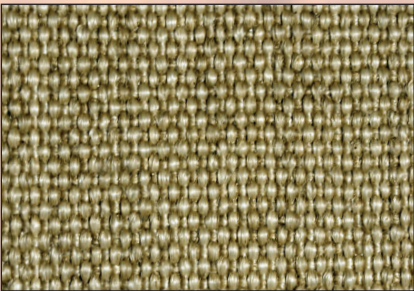
LEWCO Style 2100 Z is asbestos-free and has been specifically manufactured and coated with vermiculite to provide a higher temperature resistance in certain applications. This fabric works very well in welding curtain applications. Contact LEWCO with your application. This material should not be used to catch and hold molten slag.

| <u>Typical Properties</u> | |
|---------------------------|------------------------|
| Color | Gold |
| Weight | 21 Oz./yd ² |
| Thickness | 0.030 in |
| Width | 40", 60" |
| Weave | Plain |
| Roll Length | 50 yd |
| Fabric Melt Point | 1523°F |
| Coating Decomposition | Above 2000 °F |



LEWCO Style 2400 Z is asbestos-free and has been specifically manufactured and coated with vermiculite to provide a higher temperature resistance in certain applications. This fabric works very well in welding curtain applications. Contact LEWCO with your application. This material should not be used to catch and hold molten slag.

| <u>Typical Properties</u> | |
|---------------------------|------------------------|
| Color | Gold |
| Weight | 24 Oz./yd ² |
| Thickness | 0.065 in |
| Width | 40", 60" |
| Weave | Plain |
| Roll Length | 50 yd |
| Fabric Melt Point | 1523°F |
| Coating Decomposition | Above 2000 °F |



LEWCO Style 3500 Z is asbestos-free and has been specifically manufactured and coated with vermiculite to provide a higher temperature resistance in certain applications. This fabric works very well in welding curtain applications. Contact LEWCO with your application. This material should not be used to catch and hold molten slag.

| <u>Typical Properties</u> | |
|---------------------------|------------------------|
| Color | Gold |
| Weight | 40 Oz./yd ² |
| Thickness | 0.086 in |
| Width | 40", 60" |
| Weave | Plain |
| Roll Length | 50 yd |
| Fabric Melt Point | 1523°F |
| Coating Decomposition | Above 2000 °F |



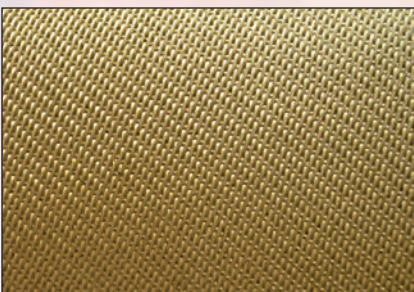
LEWCO Style 6000 Z is asbestos-free and has been specifically manufactured and coated with vermiculite to provide a higher temperature resistance in certain applications. This fabric works very well in welding curtain applications. Contact LEWCO with your application.

| <u>Typical Properties</u> | |
|---------------------------|------------------------|
| Color | Gold |
| Weight | 60 Oz./yd ² |
| Thickness | 0.129 in |
| Width | 40", 60" |
| Weave | Plain |
| Roll Length | 25 yd |
| Fabric Melt Point | 1523°F |
| Coating Decomposition | Above 2000 °F |



LEWCO Style 1800 HTO is made of 98% pure continuous filament amorphous silican material. The intended use of this product is in high temperature applications requiring thermal insulation or protection. This fabric offers excellent protection against sparks, spatters and molten slag. This fabric has been tested and meets NFPA 701-1999 Fire Tests for Flame-Resistant Textiles and Films Method 1.

| <u>Typical Properties</u> | |
|---------------------------|--------------------------|
| Color | Tan |
| Weight | 18.0 Oz./yd ² |
| Thickness | 0.032 in |
| Width | 36", 60" |
| Weave | 8-H Satin |
| Roll Length | 50 yd |
| Fabric Melt Point | 3000°F |
| Coating Decomposition | Above 2000 °F |



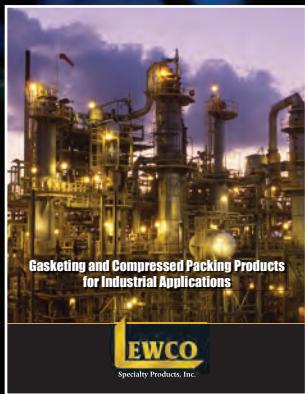
LEWCO Style 3600 HTO is made of 98% pure continuous filament amorphous silican material. The intended use of this product is in high temperature applications requiring thermal insulation or protection. This fabric offers excellent protection against sparks, spatters and molten slag. This fabric has been tested and meets NFPA 701-1999 Fire Tests for Flame-Resistant Textiles and Films Method 1.

| <u>Typical Properties</u> | |
|---------------------------|--------------------------|
| Color | Tan |
| Weight | 36.0 Oz./yd ² |
| Thickness | 0.050 in |
| Width | 36", 60" |
| Weave | 12-H Satin |
| Roll Length | 50 yd |
| Fabric Melt Point | 3000°F |
| Coating Decomposition | Above 2000 °F |

Other Lewco Products



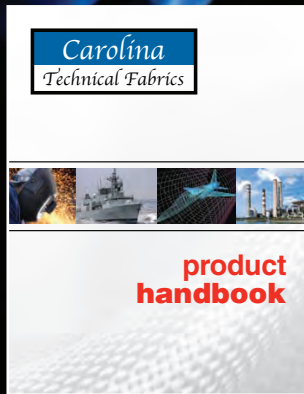
Removable/Reusable Insulation



Gasketing and Packing Products



Ceramic Fiber Products



Woven and Coated Fabrics

ISO 9001-2000 Certified

Quality Policy Statement

We will strive to meet or exceed our Customers' expectations. Lewco is committed to continually improving our products, services and the effectiveness of the Quality Management System to make our Customers totally satisfied.

We believe our products and services must be...

- PRODUCED SAFELY**
 Our products and services are produced safely and in a safe work environment.
- HIGH QUALITY**
 Our Service is courteous and professional. Our Products are manufactured under a Quality Management System certified as conforming to requirements defined in the ISO 9001:2000 Standard.
- COMPETITIVE**
 Our products and services provide exceptional value for our Customers.
- DELIVERED ON TIME**
 An inventory of finished products is maintained to meet our Customers' delivery requirements.
- CONTINUALLY IMPROVED**
 We will work together to continually improve all aspects of our business.



Proud Member of
NIA
 National Insulation Association
www.insulation.org
 Since 1988

Member
 SWICA
 WIA
 ESICA
 SEICA
 MICA
 CSICA



Specialty Products, Inc.

Corporate Headquarters / Manufacturing & Distribution Center
 6859 Renoir Avenue • Baton Rouge, Louisiana 70806
 Phone (225) 924-3221 • Toll Free 1(800) 221-6414 • Fax (225) 927-2918
www.LewcoSpecialtyProducts.com • Email Lewco@LewcoSpecialtyProducts.com

All Major Credit Cards Accepted



Stocking Locations: Baton Rouge, LA • Houston, TX • Ontario, CA • Portland, OR • Columbia, SC