

Integrity Plugz™

SILICONE
HIGH TEMP

13.75" x 3.5"

INSTALLATION GUIDE

CONSTANT TEMP

-150°F to 450°F (-101°C to 232°C)

INTERMITTENT TEMP

550°F (287°C)



integrity-products.com

PACKAGE CONTENTS

TOOLS REQUIRED:

Felt Marker, Tin Snips, Utility Knife,
Silicone Applicator, Robertson
Screwdriver, Safety Gloves



1 Integrity Plugz



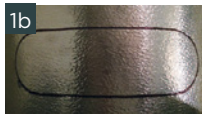
2 Long Template
straight pipe



3 Short Template
*90° & below
angled pipe*



4 Machine Screws



STEP 1 Remove cardboard template from package. Use long template for straight pipe. Use short template for pipe angled at 90° and below. Place cardboard template onto desired plug location and trace around it using a felt marker.

STEP 2 Carefully cut around the traced area. Be mindful of heat trace on pipe. **CAUTION** The edges of the cut material are sharp. Safety gloves are recommended.



silicone along the inside edge of the underside edge trim.



STEP 3 Before installing the Integrity Plugz, turn the plug over to access the underside of the edge trim. Run a small bead of silicone along the underside edge trim.

STEP 4 Fix the edge trim with supplied machine screws.

STEP 5 Silicone around edge trim. Installation is now complete.



CAUTION

Always wear appropriate PPE (personal protective equipment) which conforms to applicable work safe standards.

ONLINE VIDEO

www.youtube.com/watch?v=pit7tZNMdrE



#188, 2121 Premier Way,
Sherwood Park, AB, T8H 0G2
sales@integrity-products.com
1.800.673.0925

Integrity Plugz™

SILICONE
HIGH TEMP

14" x 4.5"

INSTALLATION GUIDE

CONSTANT TEMP

-150°F to 450°F (-101°C to 232°C)

INTERMITTENT TEMP

550°F (287°C)



integrity-products.com

PACKAGE CONTENTS

TOOLS REQUIRED:

Felt Marker, Tin Snips, Utility Knife,
Silicone Applicator, Robertson
Screwdriver, Safety Gloves



1 Integrity Plugz



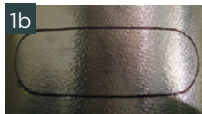
2 Long Template
straight pipe



3 Short Template
*90° & below
angled pipe*



4 Machine Screws

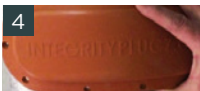


STEP 1 Remove cardboard template from package. Use long template for straight pipe. Use short template for pipe angled at 90° and below. Place cardboard template onto desired plug location and trace around it using a felt marker.

STEP 2 Carefully cut around the traced area. Be mindful of heat trace on pipe. **CAUTION** The edges of the cut material are sharp. Safety gloves are recommended.



silicone along the inside edge of the underside edge trim.



STEP 3 Before installing the Integrity Plugz, turn the plug over to access the underside of the edge trim. Run a small bead of silicone along the underside edge trim.

STEP 4 Fix the edge trim with supplied machine screws.

STEP 5 Silicone around edge trim. Installation is now complete.

CAUTION
Always wear appropriate PPE (personal protective equipment) which conforms to applicable work safe standards.

ONLINE VIDEO
www.youtube.com/watch?v=pit7tZNMdRE



#188, 2121 Premier Way,
Sherwood Park, AB, T8H 0G2
sales@integrity-products.com
1.800.673.0925

Integrity Plugz™

SILICONE
HIGH TEMP

9.5" x 3.5"

INSTALLATION GUIDE

CONSTANT TEMP

-150°F to 450°F (-101°C to 232°C)

INTERMITTENT TEMP

550°F (287°C)



integrity-products.com

PACKAGE CONTENTS

TOOLS REQUIRED:

Felt Marker, Tin Snips, Utility Knife,
Silicone Applicator, Robertson
Screwdriver, Safety Gloves



1 Integrity Plugz



2 Long Template
straight pipe



3 Short Template
*90° & below
angled pipe*



4 Machine Screws

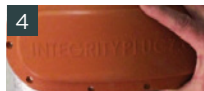


STEP 1 Remove cardboard template from package. Use long template for straight pipe. Use short template for pipe angled at 90° and below. Place cardboard template onto desired plug location and trace around it using a felt marker.

STEP 2 Carefully cut around the traced area. Be mindful of heat trace on pipe. **CAUTION** The edges of the cut material are sharp. Safety gloves are recommended.



silicone along the inside edge of the underside edge trim.



STEP 3 Before installing the Integrity Plugz, turn the plug over to access the underside of the edge trim. Run a small bead of silicone along the underside edge trim.

STEP 4 Fix the edge trim with supplied machine screws.



STEP 5 Silicone around edge trim. Installation is now complete.



CAUTION

Always wear appropriate PPE (personal protective equipment) which conforms to applicable work safe standards.

ONLINE VIDEO

www.youtube.com/watch?v=pit7tZNMdRE



#188, 2121 Premier Way,
Sherwood Park, AB, T8H 0G2
sales@integrity-products.com
1.800.673.0925

Integrity Plugz™

SILICONE
HIGH TEMP

8" x 2.5"

INSTALLATION GUIDE

CONSTANT TEMP

-150°F to 450°F (-101°C to 232°C)

INTERMITTENT TEMP

550°F (287°C)



integrity-products.com

PACKAGE CONTENTS

TOOLS REQUIRED:

Felt Marker, Tin Snips, Utility Knife,
Silicone Applicator, Robertson
Screwdriver, Safety Gloves



1 Integrity Plugz



2 Long Template
straight pipe



3 Short Template
*90° & below
angled pipe*



4 Machine Screws

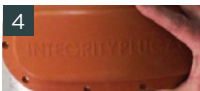


STEP 1 Remove cardboard template from package. Use long template for straight pipe. Use short template for pipe angled at 90° and below. Place cardboard template onto desired plug location and trace around it using a felt marker.

STEP 2 Carefully cut around the traced area. Be mindful of heat trace on pipe. **CAUTION** The edges of the cut material are sharp. Safety gloves are recommended.



silicone along the inside edge of the underside edge trim.



STEP 3 Before installing the Integrity Plugz, turn the plug over to access the underside of the edge trim. Run a small bead of silicone along the underside edge trim.

STEP 4 Fix the edge trim with supplied machine screws.



STEP 5 Silicone around edge trim. Installation is now complete.



CAUTION

Always wear appropriate PPE (personal protective equipment) which conforms to applicable work safe standards.

ONLINE VIDEO

www.youtube.com/watch?v=pit7tZNMdRE



#188, 2121 Premier Way,
Sherwood Park, AB, T8H 0G2
sales@integrity-products.com
1.800.673.0925